

# A PLAT OF SEA PINES PUD PHASES 2-3-4

EVERGREEN PARK SUBDIVISION  
O. R. BOOK 81 PAGE 425

LYING IN THE UNPLATTED PORTION OF GOMEZ GRANT,  
BEING A PORTION OF BLOCK "H" OF AN UNRECORDED  
PLAT OF LOTS "A" THRU "N" AT THE GOMEZ GRANT  
MARTIN COUNTY, FLORIDA

S. E. WOODLANDS ROAD ( 50' R/W )

P. O. C.  
FOUND IRON ROD

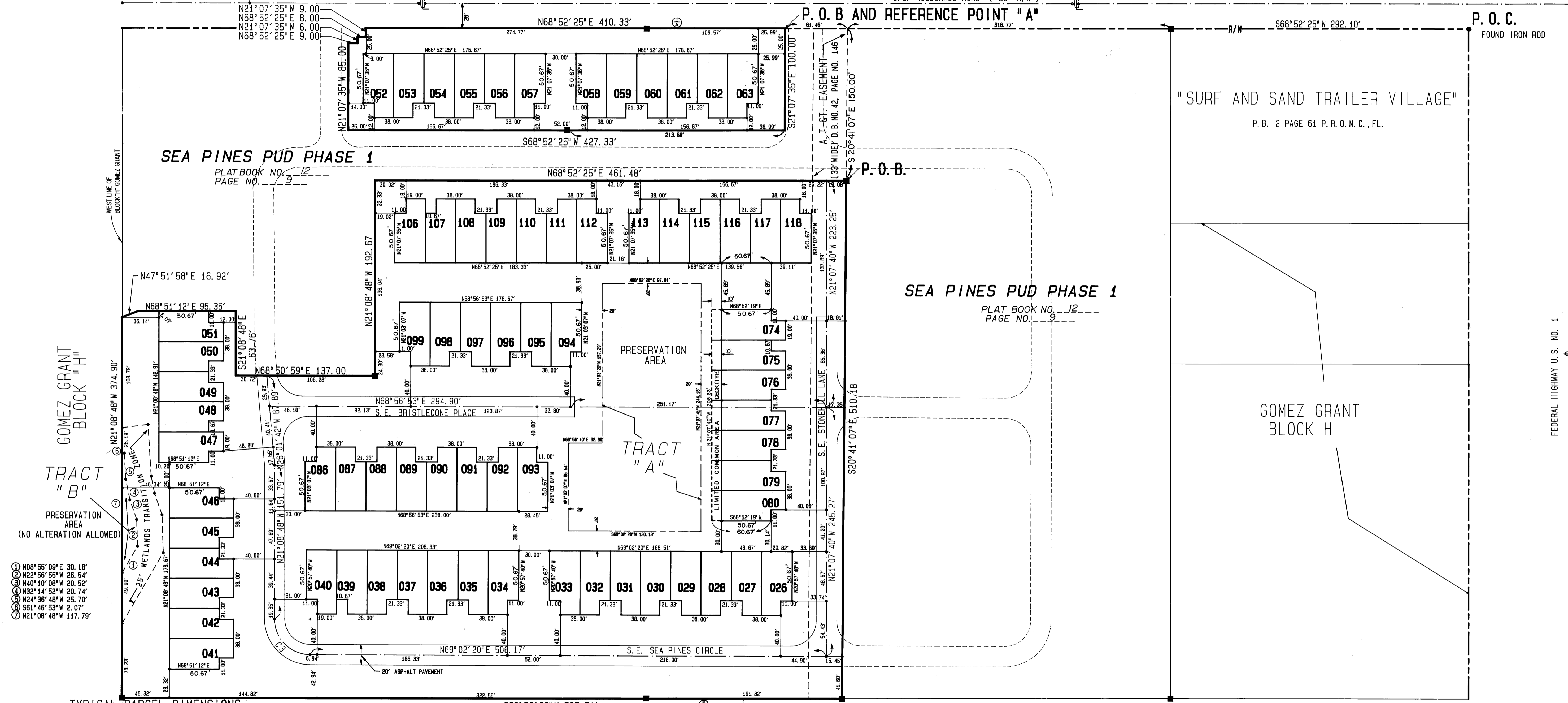
"SURF AND SAND TRAILER VILLAGE"  
P. B. 2 PAGE 61 P. R. O. M. C., FL.

SEA PINES PUD PHASE 1  
PLAT BOOK NO. 12  
PAGE NO. 9

SEA PINES PUD PHASE 1  
PLAT BOOK NO. 12  
PAGE NO. 9

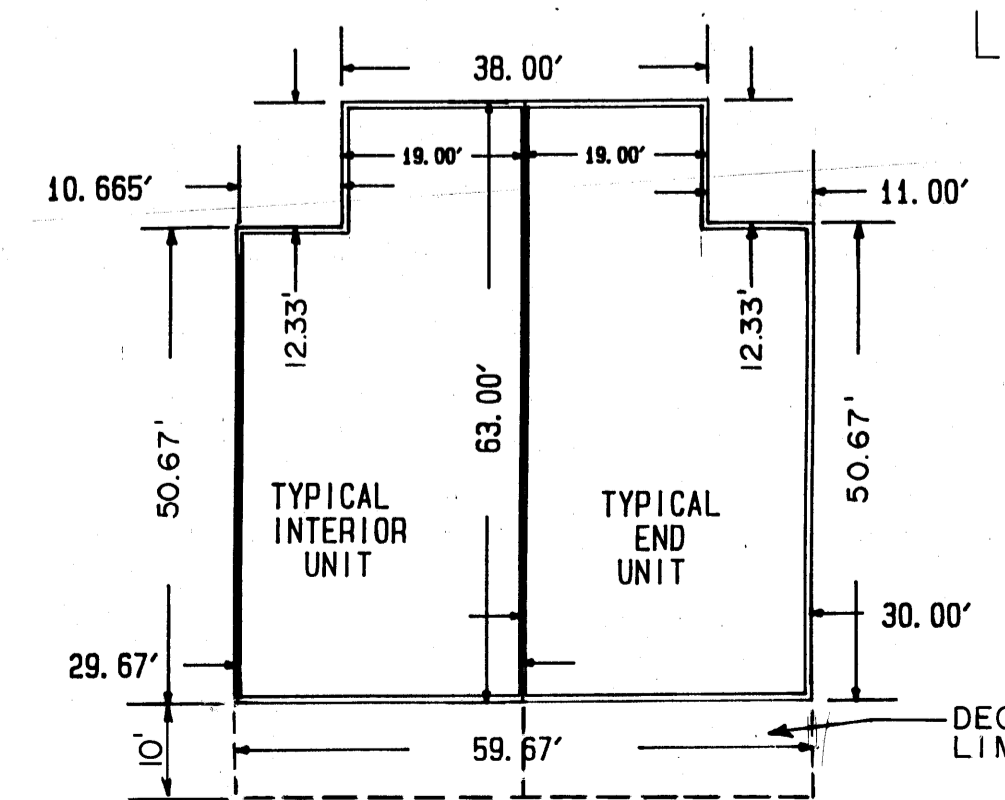
GOMEZ GRANT  
BLOCK H

FEDERAL HIGHWAY U. S. NO. 1

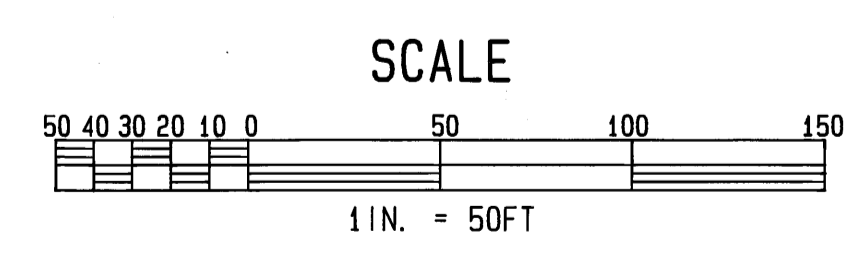


- ① N08°55'09"E 30.18'
- ② N22°56'55"W 26.54'
- ③ N40°10'08"W 20.52'
- ④ N32°14'52"W 20.74'
- ⑤ N24°38'48"W 25.70'
- ⑥ S61°46'53"W 2.07'
- ⑦ N21°08'48"W 117.79'

TYPICAL PARCEL DIMENSIONS  
LH INTERIOR AND RH END UNIT  
SCALE: 1" = 20'  
(THIS TYPICAL ONLY)



LAKESIDE VILLAGE MOBIL HOME PK. (UNREC)  
GOMEZ GRANT BLOCK "G"



LEGEND

- PERMANENT REFERENCE MARKER
- PERMANENT CONTROL POINT
- POB INDICATES POINT OF BEGINNING
- POC INDICATES POINT OF CONTROL
- ⊕ CONTROL OF ACCESS
- UTILITY EASEMENT
- - - LANDSCAPE BUFFER
- - - UPLAND NATIVE VEGETATION PRESERVATION AREA BOUNDARY (U. N. V. P. AREA)
- 000 LOT NUMBERS

AUGUST, 1990

Keith & Schnars, Inc.  
ENGINEERS - PLANNERS - SURVEYORS

141 S.W. FLAGLER AVENUE  
STUART, FLORIDA 34994  
(407) 287-2626

PLAT PAGE 2 OF 4  
SEA PINES PUD PHASES 2-3-4